

1400 Lebanon Church Road - Auxiliary

Pittsburgh, PA 15236



Building **Size**

3,350 SF

Available **Premises**

3,350 SF

Property **Highlights**

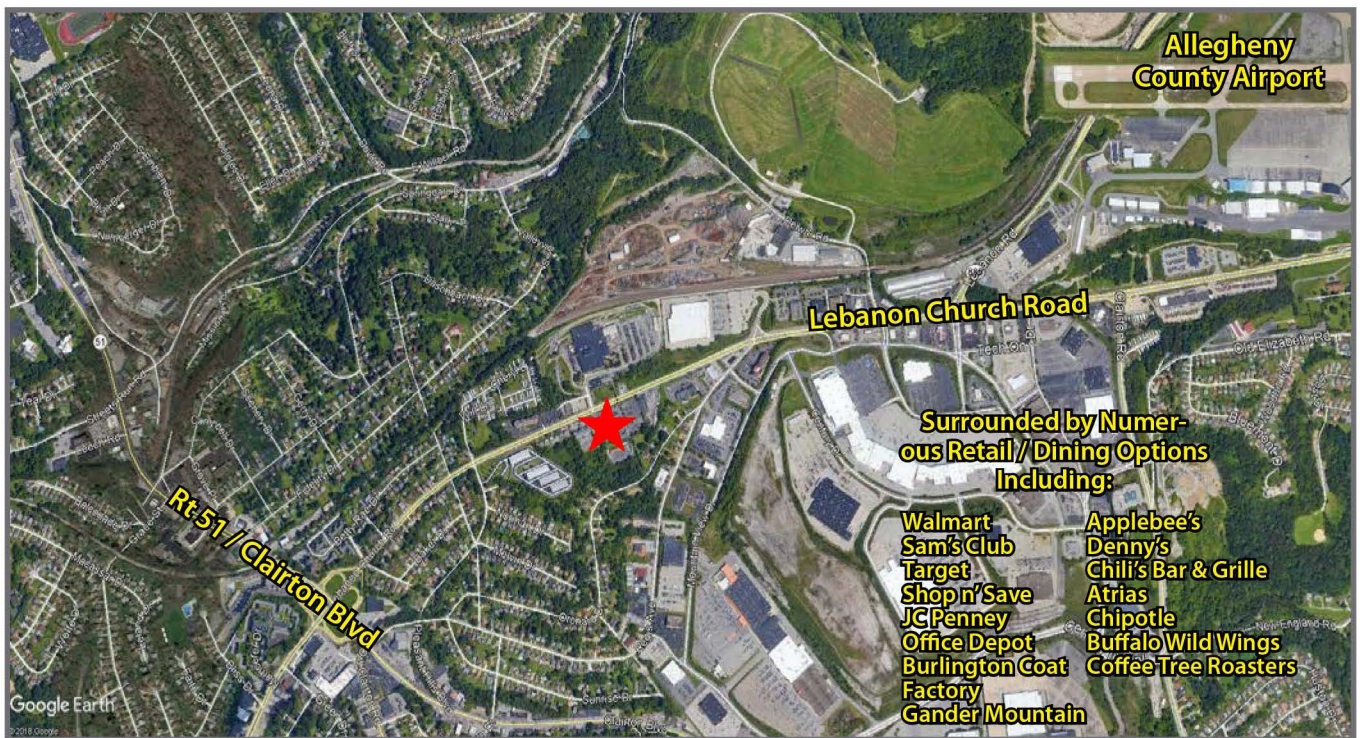
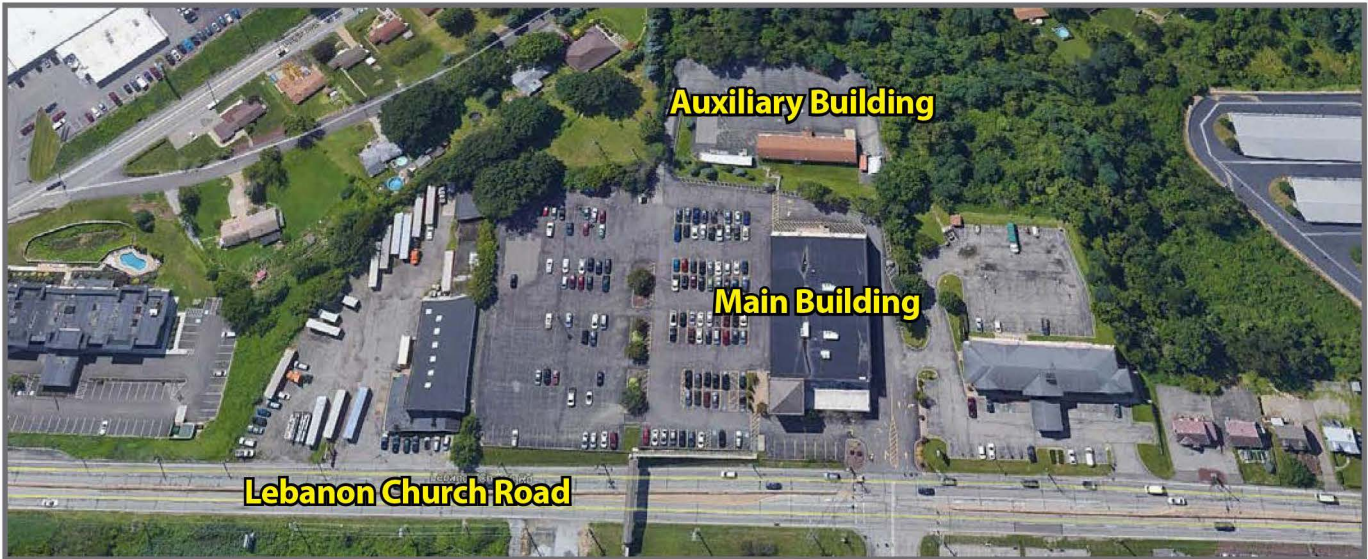
- Ample free surface (6/1,000 SF ratio)
- Grade level access
- Open space suitable for multiple uses
- Restrooms include showers
- Potential for signage on Lebanon Church Road

Open / Tech Area



Kitchen





For more information or to arrange for a tour, please contact:

Dan Jeffries
Partner

M.S. Associates
412-405-8129
Dan@MS-Assoc.com



818 Fifth Street | West Elizabeth, PA 15088
www.ms-assoc.com

Although all information furnished regarding property for sale, rental or financing is from sources deemed reliable, such information has not been verified, and no express representation is made nor is any to be implied as to the accuracy thereof, and it is submitted subject to errors, omissions, change of price, rental or other conditions, prior sale, lease or financing, or withdrawal without notice. Rental terms and all dimensions are approximate and specifications are subject to change without notice.